

# Rear Heater Baffle Template

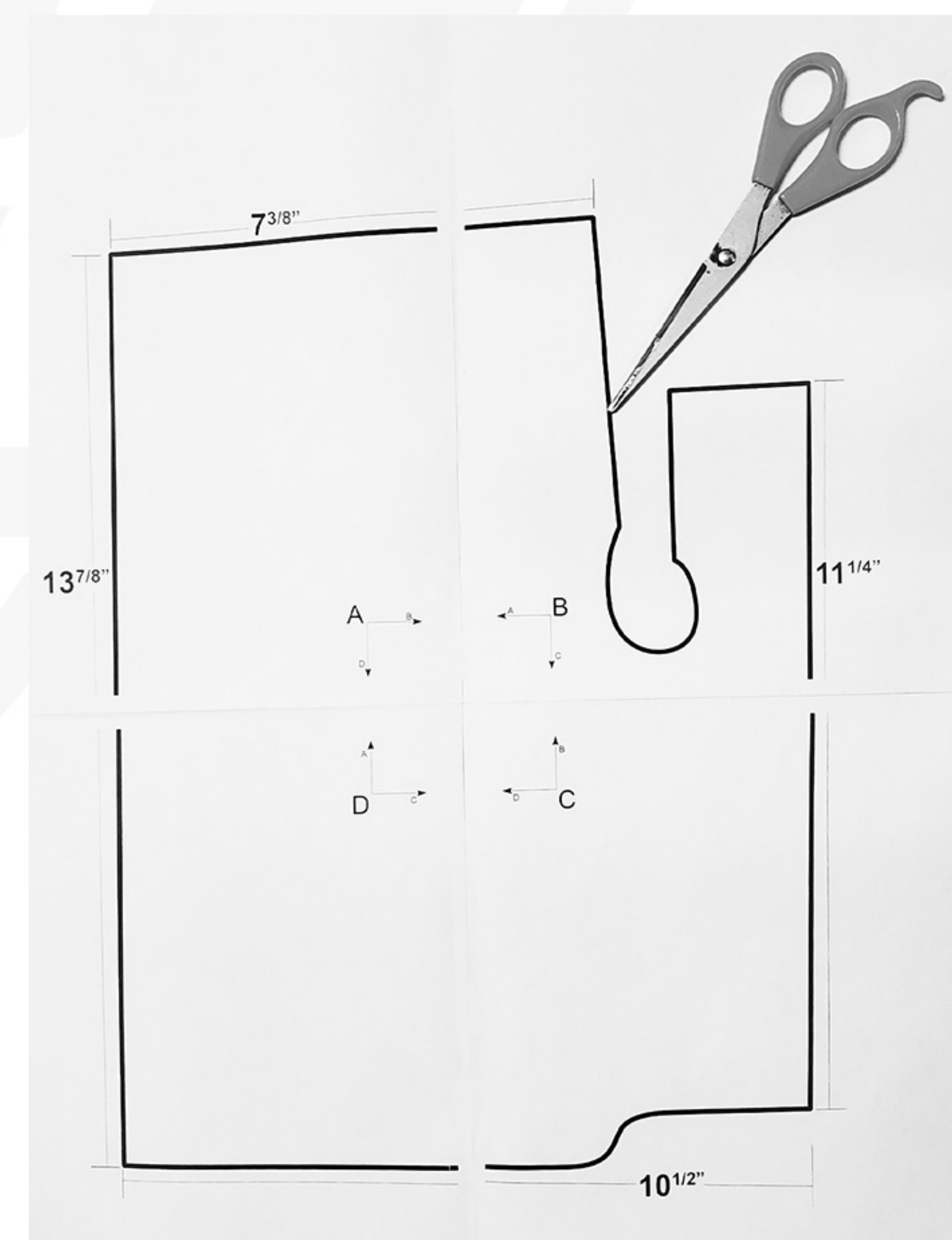
## VW Beetle 1968-79 (under rear seat)



- 1) Print and arrange pages so all letters in the center of pattern point to correct corresponding letters. Tape the 4 pieces together (do not overlap the pages).
- 2) Check that the measurements on your paper are correct. For example, the left edge in our design is 13 7/8" long. The measurements don't have to be exact, but should be close to accurate.

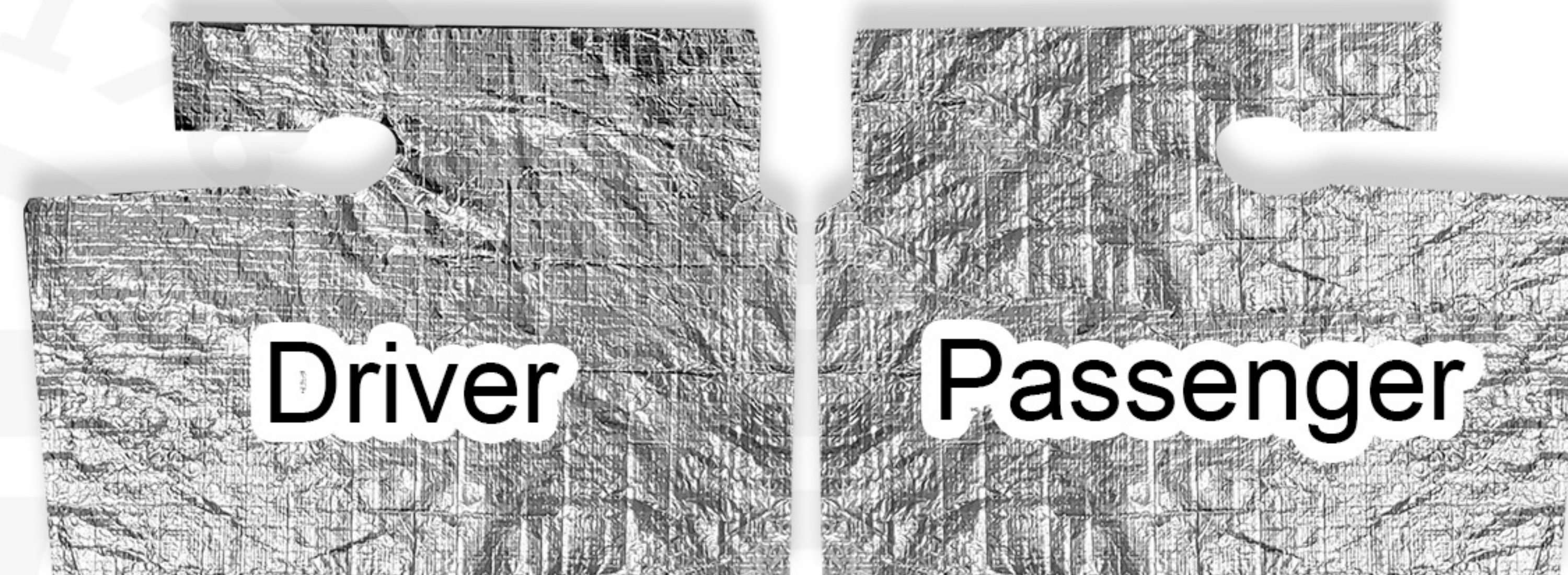
If your measurements are off significantly check your printer configurations and remove any additional margins. Reprint.

- 3) Cut out the paper pattern. Place it on the heat shield pad (metallic side up). Use a marker to trace your pattern onto your heat shield padding.

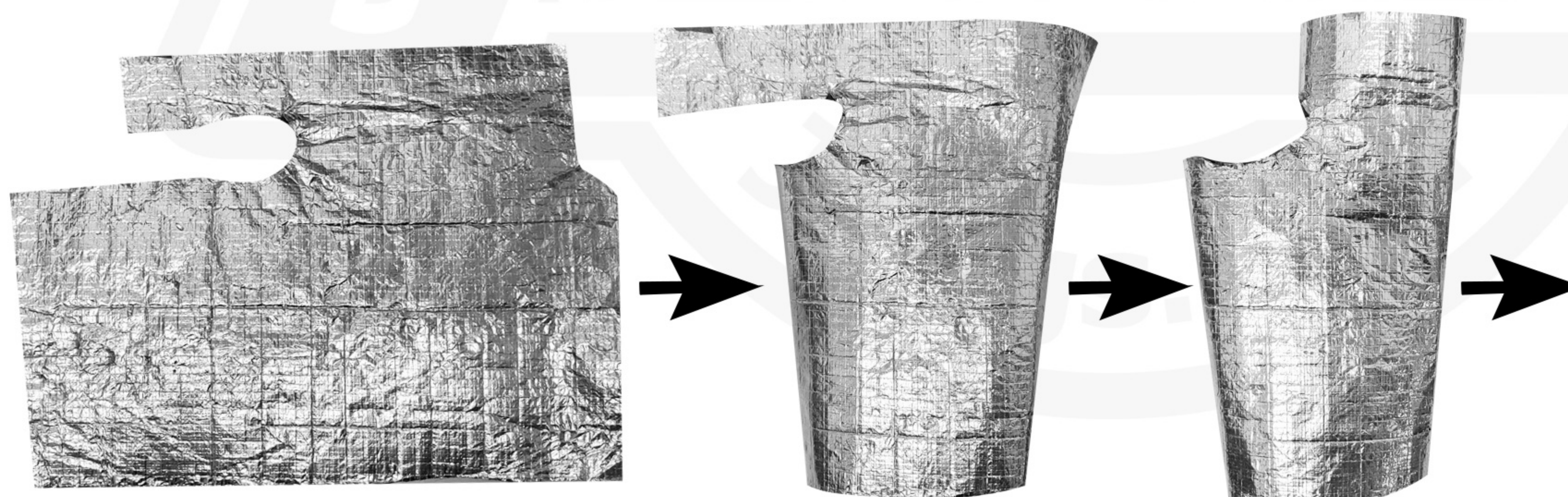


- 4) **Flip the template over to trace the opposite side.**

- 5) Cut out patterns from the heat shield padding. You should have two pieces similar to the image at right.



- 6) Wrap pattern cut outs around the rear seat baffles as shown in images below. Use zip ties to secure baffles in place.





**13<sup>7/8"</sup>**

**7<sup>3/8"</sup>**

